



Microsoft Dynamics® GP
Cash Flow Management

Copyright

Copyright © 2010 Microsoft. All rights reserved.

Limitation of liability

This document is provided "as-is." Information and views expressed in this document, including URL and other Internet Web site references, may change without notice. You bear the risk of using it.

Some examples depicted herein are provided for illustration only and are fictitious. No real association or connection is intended or should be inferred.

Intellectual property

This document does not provide you with any legal rights to any intellectual property in any Microsoft product.

You may copy and use this document for your internal, reference purposes.

Trademarks

Microsoft, Dexterity, and Microsoft Dynamics are trademarks of the Microsoft group of companies. FairCom and c-tree Plus are trademarks of FairCom Corporation and are registered in the United States and other countries.

All other trademarks are property of their respective owners.

Warranty disclaimer

Microsoft Corporation disclaims any warranty regarding the sample code contained in this documentation, including the warranties of merchantability and fitness for a particular purpose.

License agreement

Use of this product is covered by a license agreement provided with the software product. If you have any questions, please call the Microsoft Dynamics GP Customer Assistance Department at 800-456-0025 (in the U.S. or Canada) or +1-701-281-6500.

Publication date

May 2010

Contents

Introduction	1
What's in this manual.....	1
Symbols and conventions	2
Resources available from the Help menu.....	2
Send us your documentation comments	4
Chapter 1: Cash flow forecasts and transactions	5
Setting up cash flow forecasts	5
Entering "what if?" cash flow transactions.....	9
Troubleshooting	10
Chapter 2: Inquiries and reports	11
Using the Cash Flow Calendar window	11
Transaction inquiry using Cash Flow Explorer.....	13
Printing weekly reports.....	15
Printing the Monthly Calendar report.....	17

Introduction

You can use Cash Flow Management to predefine an opening balance for a forecast, based on a single cash management transaction or a specific General Ledger account balance. You also can base a forecast on one or more checkbook balances with or without work/adjust transactions, such as deposits, payments, and reconciliation adjustments that are not part of the checkbook balance.

Cash Flow Management is installed automatically when you install Microsoft Dynamics® GP. You must have the appropriate registration keys to use it, however. For additional information about entering registration keys, refer to the Installation Instructions manual.

You also can use Cash Flow Management to complete the following tasks:

- Create an unlimited number of cash flow forecast definitions
- Forecast cash flows in different ways
- Create scenarios without actually recording transactions
- Summarize daily inflows and outflows of cash in the calendar window
- View the summary of any given day's cash inflow and outflow
- Obtain weekly—detailed or summary—and monthly calendar reports

This introduction is divided into the following sections:

- [*What's in this manual*](#)
- [*Symbols and conventions*](#)
- [*Resources available from the Help menu*](#)
- [*Send us your documentation comments*](#)

What's in this manual

This manual is designed to give you an understanding of how to use the features of Cash Flow Management, and how it integrates with the Microsoft Dynamics GP system.

To make best use of Cash Flow Management, you should be familiar with systemwide features described in the System User's Guide, the System Setup Guide, and the System Administrator's Guide.

Some features described in the documentation are optional and can be purchased through your Microsoft Dynamics GP partner.




To view information about the release of Microsoft Dynamics GP that you're using and which modules or features you are registered to use, choose Help >> About Microsoft Dynamics GP.

The manual is divided into the following chapters:

- [*Chapter 1, "Cash flow forecasts and transactions,"*](#) explains how to set up cash flow forecast definitions and enter cash flow transactions, and how to troubleshoot common problems.
- [*Chapter 2, "Inquiries and reports,"*](#) describes how to forecast day-to-day cash flow balances.

Symbols and conventions

For definitions of unfamiliar terms, see the glossary in the manual or refer to the glossary in Help.

Symbol	Description
	The light bulb symbol indicates helpful tips, shortcuts and suggestions.
	The warning symbol indicates situations you should be especially aware of when completing tasks.
	The multicurrency symbol points out features or procedures that apply if you're using Multicurrency Management.

This manual uses the following conventions to refer to sections, navigation and other information.

Convention	Description
<i>Creating a batch</i>	Italicized type indicates the name of a section or procedure.
File >> Print or File > Print	The (>>) or (>) symbol indicates a sequence of actions, such as selecting items from a menu or toolbar, or pressing buttons in a window. This example directs you to go to the File menu and choose Print.
TAB or ENTER	All capital letters indicate a key or a key sequence.

Resources available from the Help menu

The Microsoft Dynamics GP Help menu gives you access to user assistance resources on your computer, as well as on the Web.

Contents

Opens the Help file for the active Microsoft Dynamics GP component, and displays the main "contents" topic. To browse a more detailed table of contents, click the Contents tab above the Help navigation pane. Items in the contents topic and tab are arranged by module. If the contents for the active component includes an "Additional Help files" topic, click the links to view separate Help files that describe additional components.

To find information in Help by using the index or full-text search, click the appropriate tab above the navigation pane, and type the keyword to find.

To save the link to a topic in the Help, select a topic and then select the Favorites tab. Click Add.

Index

Opens the Help file for the active Microsoft Dynamics GP component, with the Index tab active. To find information about a window that's not currently displayed, type the name of the window, and click Display.

About this window

Displays overview information about the current window. To view related topics and descriptions of the fields, buttons, and menus for the window, choose the appropriate link in the topic. You also can press F1 to display Help about the current window.

Lookup

Opens a lookup window, if a window that you are viewing has a lookup window. For example, if the Checkbook Maintenance window is open, you can choose this item to open the Checkbooks lookup window.

Show Required Fields

Highlights fields that are required to have entries. Required fields must contain information before you can save the record and close the window. To change the way required fields are highlighted, choose Microsoft Dynamics GP menu >> Tools >> Setup >> User Preferences >> Display, and specify a different color and type style.

Printable Manuals

Displays a list of manuals in Adobe Acrobat .pdf format, which you can print or view.

What's New

Provides information about enhancements that were added to Microsoft Dynamics GP since the last major release.

Microsoft Dynamics GP Online

Opens a Web page that provides links to a variety of Web-based user assistance resources. Access to some items requires registration for a paid support plan.

Current implementation and upgrade information The most recent revisions of upgrade and implementation documentation, plus documentation for service packs and payroll tax updates.

User documentation and resources The most recent user guides, how-to articles, and white papers for users.

Developer documentation and resources The most recent documentation and updated information for developers.

Product support information Information about the Microsoft Dynamics GP product support plans and options that are available, along with information about peer support and self-support resources.

Services information Information about Microsoft Dynamics GP support, training, and consulting services.

Microsoft Dynamics GP Community Access to newsgroups, where you can ask questions or share your expertise with other Microsoft Dynamics GP users.

CustomerSource home page A wide range of resources available to customers who are registered for a paid support plan. Includes access to Knowledge Base articles, software downloads, self-support, and much more.

Customer Feedback Options

Provides information about how you can join the Customer Experience Improvement Program to improve the quality, reliability, and performance of Microsoft software and services.

Send us your documentation comments

We welcome comments regarding the usefulness of the Microsoft Dynamics GP documentation. If you have specific suggestions or find any errors in this manual, send your comments by e-mail to the following address: bizdoc@microsoft.com.

To send comments about specific topics from within Help, click the Documentation Feedback link, which is located at the bottom of each Help topic.

Note: By offering any suggestions to Microsoft, you give Microsoft full permission to use them freely.

Chapter 1: Cash flow forecasts and transactions

You can create and keep an *unlimited* number of cash flow forecast definitions. The cash flow forecasts that you define will be displayed in the Cash Flow Calendar and the Cash Flow Explorer.

“What if” transactions (external inflow and outflow transactions that are not actually entered in Great Plains) let you see what effect actual transactions will have on your cash flow.

This information is divided into the following sections:

- [Setting up cash flow forecasts](#)
- [Entering “what if?” cash flow transactions](#)
- [Troubleshooting](#)

Setting up cash flow forecasts

The Cash Flow Forecast window is divided into four main sections: Financial, Sales, Purchasing, and General. You will use these sections to customize your cash flow forecast as follows:

Financial This section specifies the opening balance of your forecast. Choose checkbook ID balance(s), a flat amount, and/or a General Ledger account balance.

Sales This section specifies whether your forecast will include transactions from Receivables (Open and/or Work) and/or Sales Order Processing documents.

Purchasing This section specifies whether your forecast will include transactions from Payables (Open and/or Work) and/or Purchase Order Processing documents.

General This section specifies whether your forecast will include Cash Flow Transactions and the number of weeks the Explorer Reports will display.

To set up cash flow forecasts:

1. Open the Cash Flow Forecast window.
(Great Plains menu >> Tools >> Setup >> Financial >> Cash Flow Forecast)

Include Checkbook ID(s)	Rate	Multiply	Divide	All
FIRST BANK	0.000	<input checked="" type="radio"/>	<input type="radio"/>	<input type="checkbox"/>
FLEX BENEFITS	0.000	<input type="radio"/>	<input checked="" type="radio"/>	<input checked="" type="checkbox"/>
PAYROLL	0.000	<input checked="" type="radio"/>	<input type="radio"/>	<input type="checkbox"/>

2. Enter or select a Forecast ID.
3. To save this Forecast ID as the default forecast, mark the Default option. The default forecast appears in both the Cash Flow Calendar and the Cash Flow Explorer. You can change the default forecast at any time, by selecting another Forecast ID and making it the default.



If you create multiple forecasts, it is recommended that you select one as the default forecast. If you do not select a default, Cash Flow Management automatically selects the first forecast as the default.

4. Enter a description for the Forecast ID selected.
5. To include an opening balance in your forecast, mark the appropriate options. You may include a specific amount, an account balance, and/or the balance of one or more checkbooks.

Include Checkbook ID(s)	Rate	Multiply	Divide	All
FIRST BANK	0.000	<input checked="" type="radio"/>	<input type="radio"/>	<input type="checkbox"/>
FLEX BENEFITS	0.000	<input type="radio"/>	<input checked="" type="radio"/>	<input type="checkbox"/>
PAYROLL	0.000	<input checked="" type="radio"/>	<input type="radio"/>	<input type="checkbox"/>

Select the checkbook IDs that you wish to include. To mark all checkbooks, mark the All check box. To unmark all checkbooks, unmark the All check box.



If Multicurrency Management is registered, you must enter an exchange rate and select either the Multiply or Divide method for any non-functional currency checkbooks selected. Cash Flow Management will use this information to convert the non-functional currency checkbook balance into your functional currency. Functional currency checkbook IDs do not require an exchange rate.

To include deposits, payments, and reconciliation adjustments that are not part of the Checkbook ID balance, mark Include Work / Adjustment Transactions (only available for marked checkbooks).

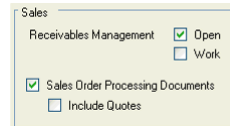
If Bank Reconciliation is registered, payments or deposits received with Sales documents will be displayed as negative values in the Calendar and Explorer. Cash Flow Management works this way to prevent doubling up these amounts which may already be included in the forecast ID if the checkbook including these deposits is marked.



If you enter individual transactions to your general ledger, as in Quick Journal entries for example, these transactions will not follow through to your checkbook and will not be included in Cash Flow Management forecasts. Always post transactions directly to your checkbook to avoid creating this situation.

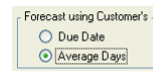
6. To include Receivables Management transactions in your forecast, mark the appropriate options. You may include Open (posted) transactions and/or Work (unposted) transactions. Open transactions will include scheduled payments.

- To include Sales Order Processing Documents—orders, back orders and unposted Sales Order Processing invoices and returns, mark the Sales Order Processing Documents option.



To include all non-expired quotes, mark the Include Quotes option (available only if you include Sales Order Processing Documents).

- If you included Receivables Management transactions and/or Sales Order Processing Documents, select one of the following date options for the system to calculate the expected cash inflow:



Due Date Based on the transaction due date (default).

Average Days Based on the number of days a customer has taken to pay invoices in full since you began doing business together (Avg. Days Life-to-Date). For more information about Average Days, see the Receivables Management documentation.

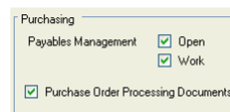
Sales transactions (Receivables Management and Sales Order Processing) will display in Cash Flow forecasts on the requested ship date of the line item plus the date option you select—either Due Date or Average Days. For example, if you select Average Days and the Average Days to pay for this customer is 35 days, for a requested ship date of June 1/06 the inflow transaction will be included in Cash Flow forecasts on July 5/06 (35 days from the requested ship date). If the requested ship date is not available, the system will use the document date instead.

Trade discount, freight, miscellaneous, taxes and any payments received will display in forecasts on the *document's* requested ship date plus the customer's terms. If the document does not have a requested ship date, the system will use the document date instead.



For purchase orders that are entered as Blanket, or Drop-Ship Blanket, the control line amount is excluded from the amounts shown for the Cash Flow Calendar and Cash Flow Explorer.

- To include Payables Management transactions in your forecast, mark the appropriate options under Purchasing. You may include Open (posted) transactions and/or Work (unposted) transactions.

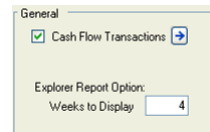


10. To include Purchase Order Processing Documents, mark the Purchase Order Processing Documents option.

Purchase Order Processing transactions will display in the Cash Flow Calendar and the Cash Flow Explorer on the required date of the line item plus the vendor's terms. For example, if the required date for a particular line item is Jan 15/06 and the vendor's terms are Net 30, this outflow transaction will display in your Cash Flow forecasts on Feb 14/06. If the required date is unavailable, the system will use the document date instead.

If you include Purchase Order Processing documents, trade discount, freight, miscellaneous, and tax will automatically be included in your forecasts as well. The entire trade discount, freight, miscellaneous, and tax amount will be included in forecasts until the document is either closed or canceled. Trade discount, freight, miscellaneous, and tax will display in the Cash Flow Calendar and the Cash Flow Explorer on the required date of the document plus the vendor's terms.

11. To include "what if?" transactions that need to be considered when forecasting but which are not entered into the Great Plains system, mark the Cash Flow Transactions option.



You will enter the "what if?" transactions manually in the Cash Flow Transactions window. To drill down to the Cash Flow Transactions window, click on the expansion button. Refer to [Entering "what if?" cash flow transactions](#) on page 9 for more information.

12. The Explorer Report Option box defines the number of weeks of information that the Cash Flow Explorer reports will contain. Enter the number of weeks you want the Cash Flow Explorer to report.
13. Choose Save to save the changes you've made in the Cash Flow Forecast window.



Clicking the About button will display the Cash Flow Management, Great Plains, and Dexterity® versions.

Entering “what if?” cash flow transactions

Cash Flow Management allows you to enter “what if” transactions (external inflow and outflow transactions that are not actually entered in Great Plains) to see what effect these transactions will have on your cash flow. These transactions will be displayed in both the Cash Flow Explorer and the Cash Flow Calendar for any forecast with the Cash Flow Transactions option marked in the Cash Flow Forecast window. (If the Calendar is launched from Explorer, only the Forecast ID selected in Explorer will launch in Calendar.)

To enter “what if?” cash flow transactions:

1. Open the Cash Flow Transactions window.
(Great Plains menu >> Tools >> Setup >> Financial >> Cash Flow Transaction)

Due Date	Description	Amount
02/06/2006	Tax installment	(\$450.00)
02/08/2006	Tax refund	(\$1,200.00)
02/28/2006	Payroll	(\$4,500.00)
02/14/2006	Gain on disposal of asset	\$20,000.00
02/20/2006	Bank charges	(\$532.68)
02/14/2006	Interest on investments	\$500.00
00/00/0000		\$0.00
		\$13,817.32

2. From the bottom-left drop-down list, select one of the following sorting methods for the transactions:

Sequence # Transactions will be displayed as they were entered originally (default).

Due Date Transactions will be displayed in ascending date order.

3. In the Due Date column, enter the transaction’s due date.
4. In the Description column, enter a description for the transaction (optional).
5. In the Amount column, enter the transaction amount. To enter a negative or outflow amount, enter a minus (-) in front of the amount.
6. Repeat steps 3 through 5 until you have entered all the transactions you wish to enter.



To delete a row, put your cursor in the row you wish to delete. From the menu bar, choose Edit >> Delete Row. To insert a row, put your cursor in the row below the desired row. From the menu bar, choose Edit >> Insert Row.

Troubleshooting

This section explains common problems you might have with Cash Flow Management. Before calling Product Support, check this section to see if there is an easy solution to the problem you are having.

Missing checkbook transactions

Situation: Individual transactions entered to my general ledger in Quick Journal entries are not included in Cash Flow Management forecasts. Why?

Solution: Individual transactions entered to your general ledger, as in Quick Journal entries, do not follow through to your checkbook and will not be included in Cash Flow Management forecasts. Always post transactions directly to your checkbook to avoid creating this type of problem OR use the Cash Flow Transaction window to record these general ledger entries.



Different currency checkbook

Situation: One of my checkbook IDs is a different currency. How can I get a consolidated look at my overall cash position in my home currency?

Solution: Cash Flow Management includes all checkbook IDs marked in the Cash Flow Forecast window. Checkbook IDs with a different currency from the functional currency will be included in cash flow forecast but will appear in the functional currency only.

Chapter 2: Inquiries and reports

Use the Cash Flow Calendar and the Cash Flow Explorer to perform inquiries. You can use the same windows to generate the following reports:

- Weekly Summary Report
- Weekly Summary by Source Report
- Weekly Detail by Source Report
- Monthly Calendar Report

Information is divided into the following sections:

- [Using the Cash Flow Calendar window](#)
- [Transaction inquiry using Cash Flow Explorer](#)
- [Printing weekly reports](#)
- [Printing the Monthly Calendar report](#)

Using the Cash Flow Calendar window

The Cash Flow Calendar displays inflows and outflows based on the default forecast you set up in the Cash Flow Forecast window. You can use the Cash Flow Calendar to scroll to different months, or to open to a specific day and view your transactions.

In the Cash Flow Calendar, outflows appear in red, inflows appear in blue, and the balance to date is shown in black.

To use the Cash Flow Calendar window:

1. Open the Cash Flow Calendar window.
(Inquiry >> Financial >> Cash Flow Calendar)

Cash Flow Calendar

Forecast ID: NEW, March 2005 Forecast

April 2007

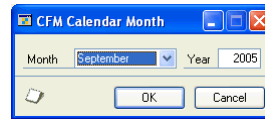
Sunday	Monday	Tuesday	Wednesday	Thursday	Friday	Saturday
1 \$1,713,900	2 \$1,713,900	3 \$1,713,900	4 \$1,713,900	5 \$1,713,900	6 \$1,713,900	7 \$1,713,900
8 \$1,713,900	9 \$1,713,900	10 \$1,713,900	11 \$1,713,900	12 \$149,516	13 \$1,863,416	14 \$1,863,416
15 \$1,863,416	16 \$9,479	17 \$1,872,896	18 \$1,872,896	19 \$1,872,896	20 \$1,872,896	21 \$1,872,896
22 \$43,982	23 \$1,916,878	24 \$1,916,878	25 \$1,916,878	26 \$1,916,878	27 \$1,916,878	28 \$1,916,878
29 \$1,916,878	30 \$1,916,878	-	-	-	-	-
-	-	-	-	-	-	-

Red - Net Daily Outflow
Blue - Net Daily Inflow
Black - Balance to Date

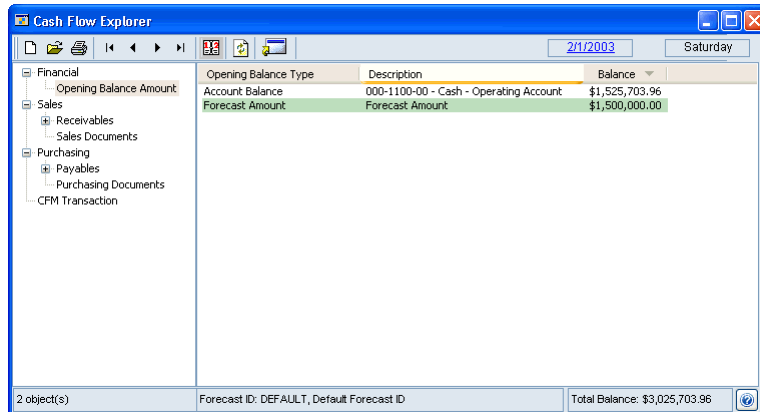
2. To view the cash flow forecast for a different month, use the Go To button on the window toolbar.



- To view the cash flow forecast from the previous or next month, click the forward or back arrow.
- To view a specific month's forecast, click the Go To button between the arrows. The CFM Calendar Month window opens. From the month drop-down list, select a month. Change the year if necessary and then choose OK.



3. To print the entire month as displayed, click the Print button.
4. To view the detail for a specific day, move the cursor over the date and click; the Cash Flow Explorer will appear listing the transactions for the day you selected.



5. If you make changes to your forecast while the Calendar window is open, click the Refresh button to see the resulting data changes in the open Calendar window.

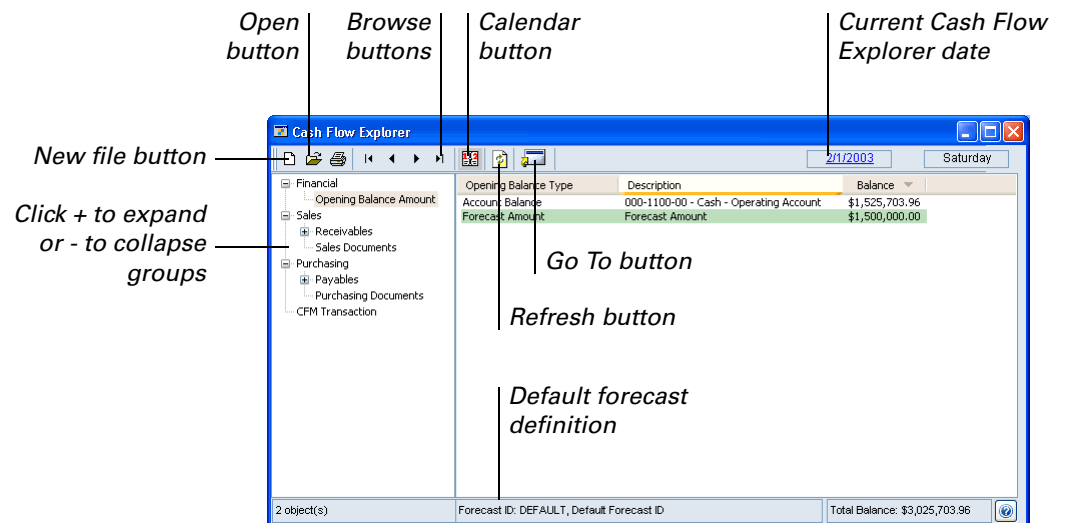
Transaction inquiry using Cash Flow Explorer

The Cash Flow Explorer displays a detailed listing of all source documents that make up the net change in cash flow for any given day. It displays the hierarchy of transactions and provides information in an expandable outline. When you select a given date on the Cash Flow Calendar, the Cash Flow Explorer opens the source documents for that date and provides detailed information at your fingertips. The settings in Explorer are based on the default forecast definition settings as predefined in the Cash Flow Forecast window.

With Cash Flow Explorer, you can easily change the forecast period to a different day, month, or year. The Cash Flow Explorer provides various reports and inquiries for supporting or original documents.

To use the Cash Flow Explorer:

1. Open the Cash Flow Explorer.
(Inquiry >> Financial >> Cash Flow Explorer)



2. Use the controls in the window.

The following table describes tasks you can perform:

To...	Do this...
Change the date of your forecast in the Explorer	Use the browse buttons to go to the previous or next month or day.
Create a new forecast definition	Click the New File button on the Explorer toolbar. The Cash Flow Forecast window will appear.
Open the Cash Flow Calendar	Click the Calendar button. The Cash Flow Calendar will appear.
Open the Goto Calendar from the Cash Flow Explorer	Click on the date in the upper right-hand corner of the Explorer.
Display the cash flow information for the selected date	Click on the date in the Goto Calendar. The Goto Calendar closes and the Explorer displays the cash flow information for the selected date.
Open the Inquiry Zoom window	Select the line in the Explorer window that you would like to open and double-click, OR Select the line in the Explorer window that you would like to open and click the Go To button.
Print report(s)	Click the Print button. From the drop-down menu, select the report you want to print. The starting date for the report will be the current Explorer date. The number of weeks in the report will depend on the number of weeks predefined in the Explorer Report Options field in the Cash Flow Forecast window.
Refresh the window	Click the Refresh button. If you make changes to your forecast while the Explorer window is open, you must click the Refresh button to see the resulting data changes in the open Explorer window.
Select and open another Forecast ID	Click the Open button. Select a forecast ID in the window that appears.
Sort the source transactions	Click the specific column heading. For example, if you want to sort by Vendor ID, click the Vendor ID column heading. Click or right-click the column heading to change the sorting method.

Printing weekly reports

Week 0 on all of the weekly reports indicates the running balance of all the transactions prior to the start date. The start date for all weekly reports is based on the current Cash Flow Explorer date. The number of weeks in the report is based on the number of weeks as predefined in the Explorer Report Options field in the Cash Flow Forecast window.

To print any of the weekly reports:

1. Open the Cash Flow Explorer.
(Inquiry >> Financial >> Cash Flow Explorer)
2. Choose the Print icon, and then from the drop-down menu, select the report of your choice: Weekly Summary, Weekly Summary by Source, or Weekly Detail by Source. The Report Destination dialog box appears.
3. Select the destination(s) for the report and click OK.

Weekly Summary report

The Weekly Summary report displays a summary of the weekly cash flow net change for a predefined number of weeks beginning with the current Cash Flow Explorer date. The number of weeks for this report was defined in the Cash Flow Forecast window (Explorer Report Options field).

System: 3/29/04 1:39:20 PM Fabrikam, Inc. Page: 1
User Date: 2/20/06 WEEKLY SUMMARY REPORT User ID: sa
Cash Flow Management

Forecast ID: NEW
Description: March-2005 Forecast
Financial Options: Opening Balance Amount, CI Account
Sales Options: PM Open, SOP, Include Quotes, Due Date
Purchasing Options: PM Open, PM Work, POP
General Options: CFM Transaction, 4 Weeks

Week	Start Date	End Date	Net Change	Balance
0	Opening Balance		\$358,727.27	\$358,727.27
1	2/20/06	2/26/06	(\$532.68)	\$358,194.59
			\$358,194.59	

Weekly Summary by Source report

The Weekly Summary by Source report is a weekly cash flow net change report for a predefined number of weeks—the number of weeks defined in the Cash Flow Forecast window. This report displays the subtotals of the Forecast definition options. For example, RM Open indicates the summary of all Receivables Management transactions that are posted. This report includes the week number, the source description, start and end dates, net change, and balance for each week.

System: 3/29/04 1:43:52 PM Fabrikam, Inc. Page: 1
 User Date: 2/20/06 WEEKLY SUMMARY BY SOURCE User ID: sa
 Cash Flow Management

Forecast ID: NEW
 Description: March-2005 Forecast
 Financial Options: Opening Balance Amount, GL Account
 Sales Options: RM Open, SOP, Include Quotes, Due Date
 Purchasing Options: PM Open, PM Work, POP
 General Options: CFM Transaction, 4 Weeks

Week	Start Date	End Date	Forecast Option	Net Change	Balance
0			Opening Balance		
			Account 000-1130-00 Balance	(#100,313.95)	
			Opening Balance Amount	#500.00	
			Receivables Open	\$1,887,064.73	
			Payables Open	(#1,331,428.67)	
			Purchasing Documents	(#111,444.84)	
			CFM Transaction	\$14,350.00	

				\$358,727.27	\$358,727.27
1	2/20/06	2/26/06	CFM Transaction		
				(#532.68)	

				(#532.68)	\$358,194.59

				\$358,194.59	
				=====	

Weekly Detail by Source report

The Weekly Detail by Source report is a weekly cash flow net change report for a predefined number of weeks which displays the detail of the Forecast definition options. For example, RM Open indicates the detail of all supporting documents for that given week. It includes the week number, the source description, start and end dates, Transaction ID (Customer ID or Vendor ID depending on the source), document number, document date, due date, remaining amount, and balance for each week.

Week Start Date	End Date	Document No	Transaction Description	Doc Type	Doc Date	Due Date	Remaining Amount	Balance
0 Opening Balance								
			+	Forecast Amount			\$500.00	
				Account 000-1130-00 Balan			(\$100,313.95)	
				Receivables Open			\$1,887,064.73	
				Payables Open			(\$1,331,428.67)	
				Purchasing Documents			(\$111,444.84)	
				CFM Transaction			\$14,350.00	

						Total for Week Ending 2/19/06	\$358,727.27	\$358,727.27
							=====	
1	2/20/06	2/26/06						
				CFM Transaction				
			5	Bank charges		2/20/06 2/20/06	(\$532.68)	

						Total for Week Ending 2/26/06	(\$532.68)	\$358,194.59
							=====	

Printing the Monthly Calendar report

The Monthly Calendar report prints a snapshot of the current Cash Flow Calendar month. It also displays the net inflows, net outflows, and balance to date as you would see on the Cash Flow Calendar.

To print the Monthly Calendar report:

1. Open the Cash Flow Calendar.
(Inquiry >> Financial >> Cash Flow Calendar)
2. Click either the Previous or the Next button to proceed to the month for which you want to print a report.
3. Choose File >> Print; the Report Destination dialog box appears.
4. Select the destination(s) for the report and click OK.